



# Roof Louvers (Exhaust)

For those who prefer roof louvers (or where existing roof louvers are being replaced), Master Flow® offers a complete line of quality choices. In fact, we're so confident in the performance of our louvers that we offer a four-year ltd. warranty! When you compare our features and warranty to any other brand on the market, Master Flow® louvers are the obvious choice!

## SSB960A **Our Best Metal Roof Louver** with fully enclosed hood to help prevent rodent/insect infiltration and leaf/pine needle clogging



Texas Department  
of Insurance  
Product Evaluation RV-27



MIAMI-DADE  
Approval # 05-0909.02

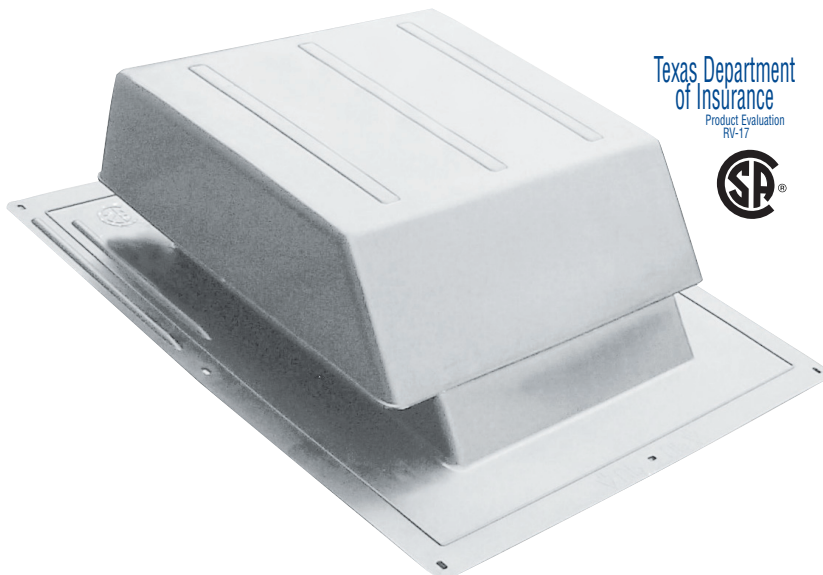
- **Slant-Back Design For Superior Performance...** Best choice against weather infiltration, especially in steep-slope applications
- **20% More Ventilating Capacity\*...** A full 60 sq.in. of net free ventilating area (NFA) per vent
- **Lower Installation Costs...** Fewer vents needed for roof installation\*
- **Looks Better...** Embossed finish hides scratches, resists wear
- **Popular Colors...** To complement most roofs (Black, Brown, Weathered Wood, White, Mill, Shingle Match™ Weathered Wood)
- **Professional's Choice...** 12% larger flashing with pre-drilled nail holes makes installation easier; helps prevent leaks
- **Longer Lasting...** Aluminum construction won't rust

\*Compared to 50 sq. in. NFA vents

### How Many Do I Need?

TOTAL ATTIC SQUARE FOOTAGE	RECOMMENDED NUMBER OF SSB 960 LOUVERS	MINIMUM INTAKE VENTILATION (NET FREE AREA IN SQ. IN.)
0-1000	4	240
1001-1500	6	360
1501-2000	8	480
2001-2500	10	600
2501-3000	12	720

## IR65 **Our Best High-Impact Resin Roof Louver** with superior resistance against dents and scratches



Texas Department  
of Insurance  
Product Evaluation  
RV-17



- **Slant-Back Design For Superior Performance...** Best choice against weather infiltration, especially in steep-slope applications
- **High Impact Resin Construction...** With UV inhibitors to maintain consistent color
- **30% More Ventilating Capacity\*...** A full 65 sq. in. of net free ventilating area (NFA) per vent
- **Less Hassles...** Scratch, crush, and dent resistant
- **Lower Installation Costs...** Fewer vents needed for roof installation\*
- **4 Popular Colors...** To complement most roofs (Black, Brown, Gray, Weathered Wood)
- **Professional's Choice...** 12% larger flashing with pre-drilled nail holes make installation easier; helps prevent leaks
- **Unique, Built-In Screen...** Helps deter bird and rodent infiltration; prevents clogging from leaves and pine needles
- **Hood Stays In Place...** Hood is securely snapped in place (rather than tacked) to reduce chance of blow-off

\*Compared to 50 sq. in. NFA vents

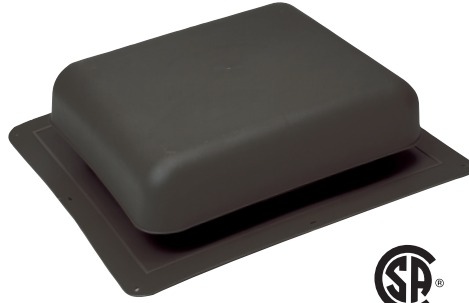
### How Many Do I Need?

TOTAL ATTIC SQUARE FOOTAGE	RECOMMENDED NUMBER OF IR65 LOUVERS	MINIMUM INTAKE VENTILATION (NET FREE AREA IN SQ. IN.)
0-1000	4	260
1001-1500	6	390
1501-2000	8	520
2001-2500	10	650
2501-3000	12	780



## How Many Do I Need?

TOTAL ATTIC SQUARE FOOTAGE	RECOMMENDED NUMBER OF RT65 LOUVERS	MINIMUM INTAKE VENTILATION (NET FREE AREA IN SQ. IN.)
0-1000	4	240
1001-1500	6	360
1501-2000	8	480
2001-2500	10	600
2501-3000	12	720



### **RT-65** **Square-Top Resin Construction**

- **Large Capacity...** Full 60 sq. in. of net free ventilating area (NFA) per vent
- **Less Hassles...** Scratch, crush and dent resistant
- **4 Popular Colors...** To complement most roofs (Black, Brown, Gray, Weathered Wood)
- **Easier To Install...** Pre-drilled nail holes with extra wide flashing area
- **Homeowner's Choice...** High-impact resin construction looks great for years

## How Many Do I Need?

TOTAL ATTIC SQUARE FOOTAGE	RECOMMENDED NUMBER OF IR61 LOUVERS	MINIMUM INTAKE VENTILATION (NET FREE AREA IN SQ. IN.)
0-1000	7	259
1001-1500	10	370
1501-2000	13	481
2001-2500	17	629
2501-3000	20	740



### **IR-61** **Super-Low Profile, Slant-Back Resin Construction**

- **Sleek Design...** Super-low profile (just 2" high!) for better appearance
- **Homeowner's Choice...** High-impact resin construction looks great for years
- **4 Popular Colors...** To complement most roofs (Black, Brown, Gray, Weathered Wood)
- **Easier To Install...** Pre-drilled nail holes make installation easier

## How Many Do I Need?

TOTAL ATTIC SQUARE FOOTAGE	RECOMMENDED NUMBER OF NSB50 LOUVERS	MINIMUM INTAKE VENTILATION (NET FREE AREA IN SQ. IN.)
0-1000	5	250
1001-1500	8	400
1501-2000	10	500
2001-2500	12	600
2501-3000	15	750



Approval # NOA 02-052402

Texas Department of Insurance  
Product Evaluation RV-17

### **NSB50A** **Square-Top Slant-Back Metal Vent**

- **Large Capacity...** Full 50 sq. in. of net free ventilating area (NFA) per vent
- **Long Lasting...** Aluminum construction resists rust (available in galvanized construction by special order only)
- **Popular Colors...** See chart at bottom of page

## How Many Do I Need?

TOTAL ATTIC SQUARE FOOTAGE	RECOMMENDED NUMBER OF R or RV Series LOUVERS	MINIMUM INTAKE VENTILATION (NET FREE AREA IN SQ. IN.)
0-1000	5	250
1001-1500	8	400
1501-2000	10	500
2001-2500	12	600
2501-3000	15	750



### **RV50A/R50A\*** **Square-Top Metal Utility Vent**

- **Perfect Utility Vent...** Recommended for kitchen duct outlets and bathroom fan exhausts, as well as attic ventilation
- **Large Capacity...** Full 50 sq. in. of net free ventilating area (NFA) per vent
- **Versatile...** Available with square (R50A) or round (RV50A) throat, in heavy duty aluminum
- **Easier To Install...** Pre-drilled nail holes with extra wide flashing area
- **Popular Colors...** See chart at bottom of page

\*R50A is CSA approved

Mill	Brown	Black	Weathered Wood	Shingle Match™ Weath. Wood	Gray	White	Construction	Opening Size	Flashing Dimensions	Ht.	NFA (Sq. In.)
SSB960A	SSB960ABR	SSB960ABL	SSB960AWW	SSB960ASMWW	-	SSB960AW	Aluminum	10"	18" x 20 1/2"	5 1/2"	60
NSB50A	NSB50ABR	NSB50ABL	NSB50AWW	-	-	-	Aluminum	9 1/4"	18 3/4" x 16 3/4"	4"	50
-	IR65BR	IR65BL	IR65WW	-	IR65G	-	High Impact Resin	11 1/4" x 10 1/4"	20 1/4" x 18"	5 1/2"	65
-	IR61BR	IR61BL	IR61WW	-	IR61G	-	High Impact Resin	11 1/4" x 9 1/4"	18 1/2" x 17 1/2"	4 1/4"	37
-	RT65BR	RT65BL	RT65WW	-	RT65G	-	High Impact Resin	11 1/4" x 10"	18 1/2" x 18"	4"	60
RV50A	RV50ABR	RV50ABL	RV50AWW	-	-	-	Aluminum	9"	16 1/2" x 15 1/2"	4"	50
R50A	R50ABR	R50ABL	R50AWW	-	-	-	Aluminum	9"	17 3/8" x 15 3/8"	4"	50